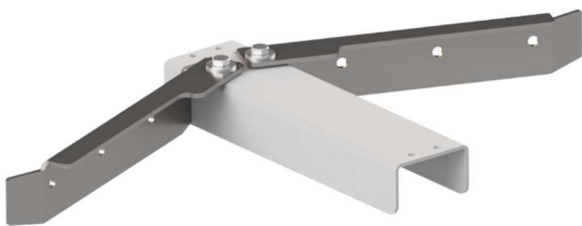




Poultry manure scraper

Systematic manure removal



- ✓ For aviary housing
- ✓ Manure removal
- ✓ Particulates reduction
- ✓ Ammonia reduction
- ✓ Better living environment
- ✓ System available with one, two or three rows
- ✓ Various sizes of scrapers (600, 750 en 100)
- ✓ Choose between galvanized or stainless steel scrapers
- ✓ To combine with our manure removal belts and floor conveyor



How it works

Our poultry manure removal system systematically removes the manure in your farmhouse. The floor scrapers are positioned in a line throughout the farmhouse and move the manure to the backside of the farmhouse.

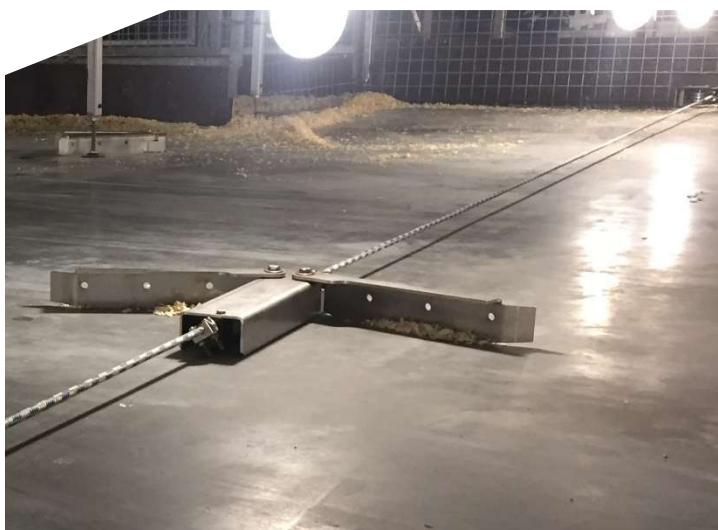
At the backside of the farmhouse, the manure will be removed by a manure removal belt or floor conveyor.

Variants and options

Depending on the dimensions of the farmhouse and your specific wishes, several variants and options are possible.

There are three variants of the system possible; a system with one, two or three rows. The scrapers (galvanized or in stainless steel) are available in sizes 600, 750 and 1000 mm.

New is the option to choose for a push-through system. With this system, cables no longer run over the manure pit. The cable bends in front of the manure pit and the push-through scraper slides the manure through the wall opening.



The benefits

Working with our poultry manure removals results in the following benefits:

- Particulates reduction
- Ammonia reduction
- Better living environment
- User friendly
- Less manual work
- Less eggs outside the nest